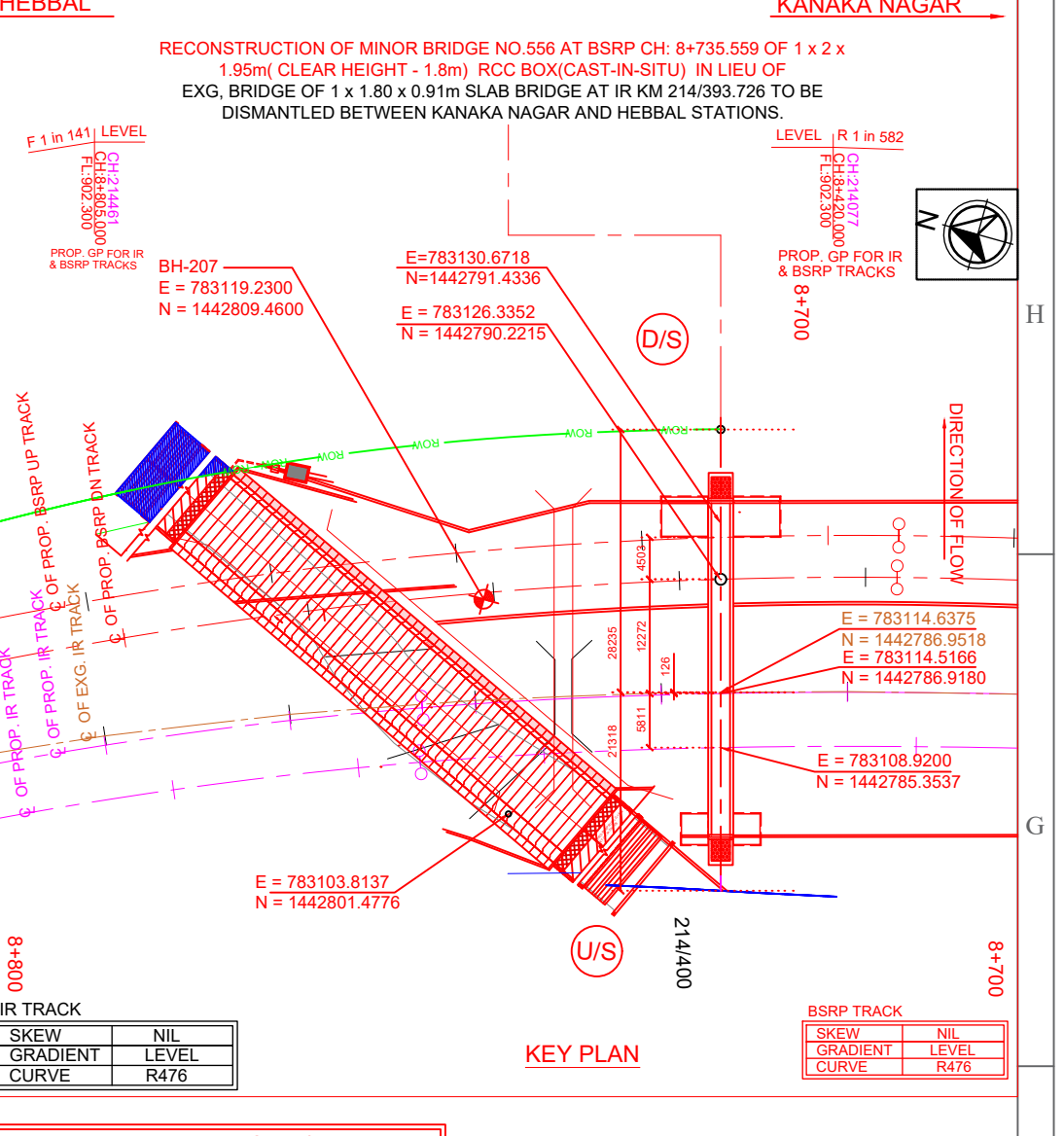
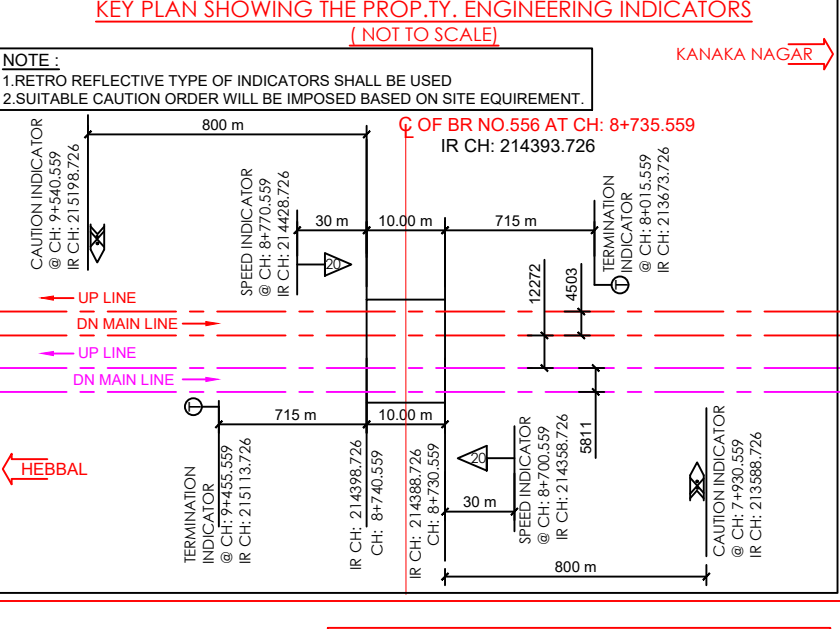


BRIDGE DETAILS			
DESCRIPTION	EXG. BRIDGE 556	PROF. BSRRP BRIDGE 556	
CHANGE AT CENTER OF BRIDGE (m)	-	8+735.559	
RAIL LEVEL AT CENTER OF BRIDGE (m)	-	903.362	
FORMATION LEVEL AT CENTER OF BRIDGE (m)	-	902.300	
(Nose x SPAN(s) x HEIGHT(m))	-	1 x 2 x 1.95	
STRUCTURE CONFIGURATION	-	RCC BOX	
ABBREVIATIONS			
CL	CENTER LINE		
TOP	TYPICAL		
THK	THICKNESS		
UP	UP STREAM SIDE		
DS	DOWN STREAM SIDE		
DOWN	DOWN		
BR	BRIDGE		
PROF.	PROPOSED		
EXG.	EXISTING		
CON.	CONSTRUCTION JOINT		

DEPTH OF CONSTRUCTION FOR 1 x 2 x 1.95 m RCC BOX	
RAIL 60 kg	172 mm
GR PAD	10 mm
PCC SLEEPER	200 mm
BALLAST CUSHION	200 mm
EARTH CUSHION	200 mm
TOP SLAB	500 mm
TOTAL	408 mm

GRADE OF CONCRETE	
1. WEARING COURSE	M25
2. LEVELING COURSE (PCC)	M25
3. RETAINING/RETURN WALL	M25



STRATA DESCRIPTION	DEPTH IN METERS	REMARKS	
		(N-VALUE)	(ANISOM)
GROUND LEVEL 898.609	-		
LOOSE CLAYEY SAND (C)	0.00		
	0.50		
	1.00		
PROPOSED BOX	1.50	114.35	
	2.00	2029	
	2.50		
STIFF CLAY OF LOW PLASTICITY (CL)	3.00	N = 11 (3/47)	400 (RW-25)
	3.50		
	4.00		
MEDIUM DENSE TO DENSE SILTY SAND (SM)	4.50	N = 15 (3/87)	
	5.00		
	5.50		
	6.00	N = 24 (8/101)	
	6.50		
	7.00	N = 30 (8/131)	
	7.50		
	8.00		
	8.50		
	9.00	N = 36 (8/177)	
END OF BOREHOLE AT 9.00m (SM)			
BOREHOLE ID 556 (BH-207)			

GOOD FOR CONSTRUCTION

GENERAL CONSULTANTS:	
AECOM EGIS-AECOM-WSP	
EMPLOYER:	
RAIL INFRASTRUCTURE DEVELOPMENT COMPANY (KARNATAKA) LIMITED	
GENERAL ARRANGEMENT DRAWING	
BENGALURU SUBURBAN RAILWAY PROJECT(BSRP) BETWEEN STATIONS BENNIGANAHALLI AND CHIKKABANAVARA	
RECONSTRUCTION OF MINOR BRIDGE NO.556 AT BSRRP CH-8+735.559 OF 1 X 2.0 X 1.95m (CLEAR HEIGHT - 1.9m) RCC BOX (CAST-IN-SITU) IN LIEU OF THE EXG. BRIDGE OF 1 x 1.80 x 0.91m RCC SLAB AT IR KM 214033.726 BETWEEN KANAKA NAGAR AND HEBBAL STATIONS	
KRIE.DRG.NO:	
HQ.DRG.NO:	
SCALE (UNLESS SPECIFIED OTHERWISE)	
DRAWING NO. Q2077-BSRRP-CR-2-CB-N-30-1103	
REVISION DWG STATUS	
3 C	
PRELIMINARY DWG (P), DEFINITIVE DWG (D), CONSTRUCTION DWG (C), AS BUILT DWG (B), SHOP DWG (S), MANUFACTURED DWG (M) SHEET SIZE: A1	